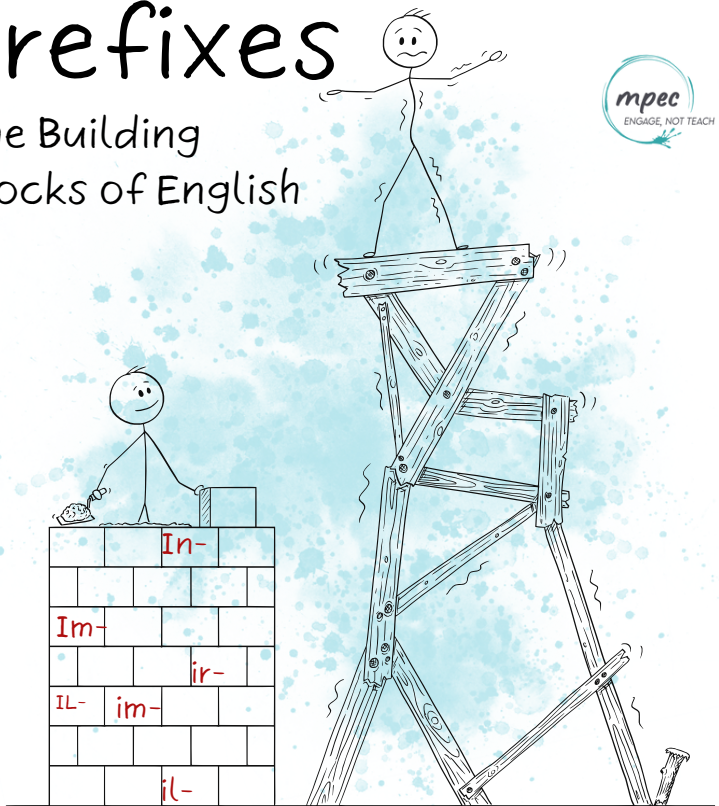


# Prefixes

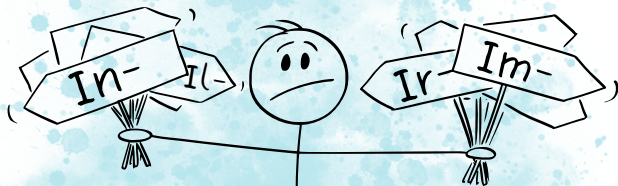
The Building  
Blocks of English



When to Use **In-**/**Im-**/**Ir-**/**Il-**?

# Which one should I use?

?

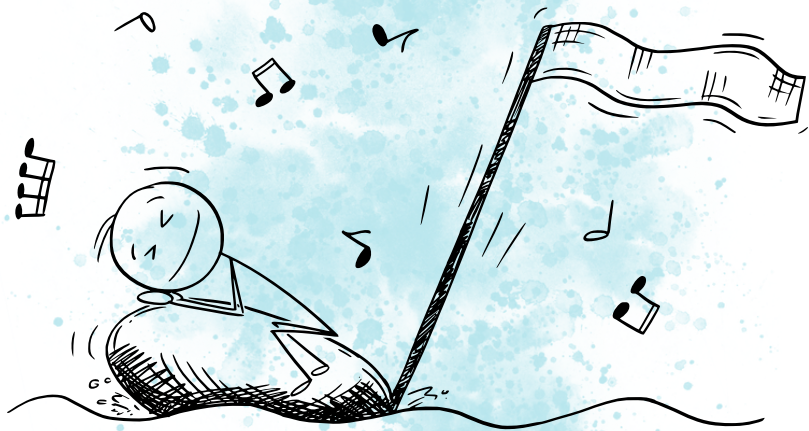


They all are ways to say  
"not" or to negate  
something



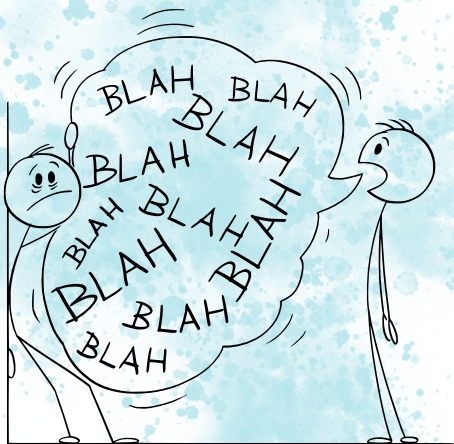
How do you know which one to use when?

# It's all about phonetic harmony



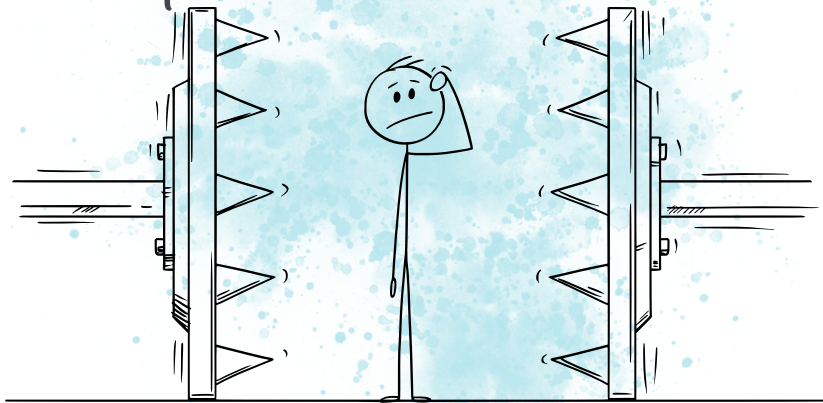
We choose the prefix that sounds best  
with the word that follows.  
Would you like to see it in practice?

# Inconsiderate individual's incoherent babble



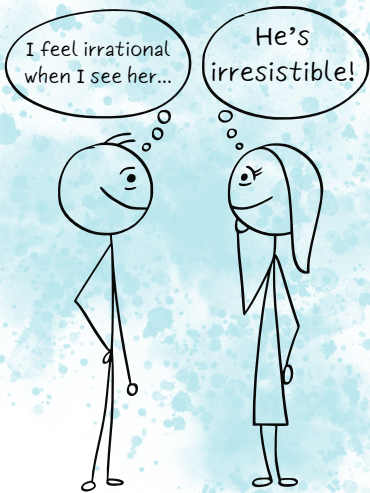
In- is generally used with words that start with a consonant (except for L or R) or vowels: inactive, ineffective.

Fear is an immense  
impediment to  
impactful  
presentations



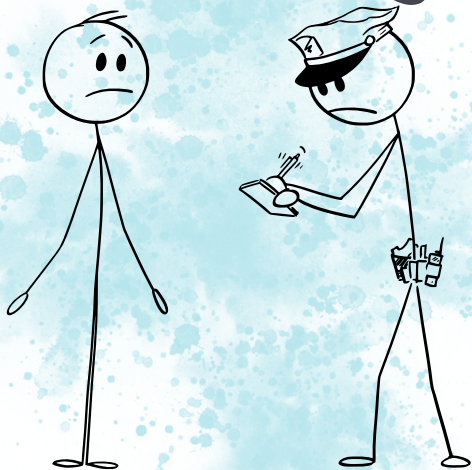
Im- is placed before words that start  
with an 'm' or 'p': impossible,  
impermeable.

# Even **Ir**regular conversation practice isn't **ir**relevant



Ir- joins words that start with 'r':  
irregular, irresolute.

I didn't know  
it was illegal!



Il- is the one you choose when you have words that start with 'l': illegal, illegible.



# Like & Follow



For even more fascinating English content